

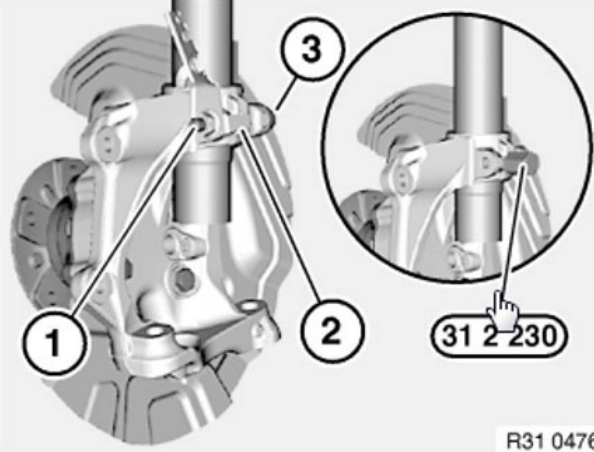
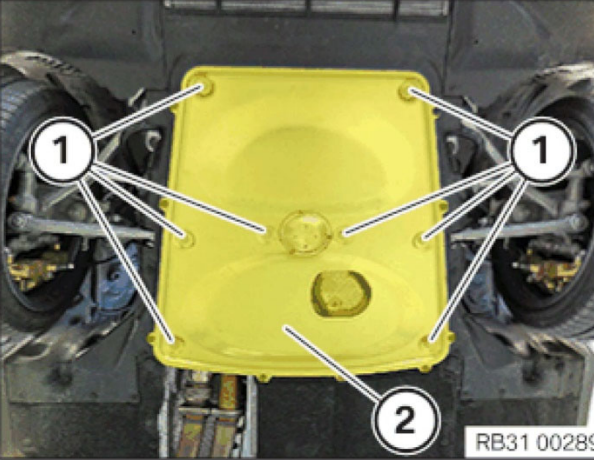
FRONT AXLE STEERING NOISE ELIMINATION

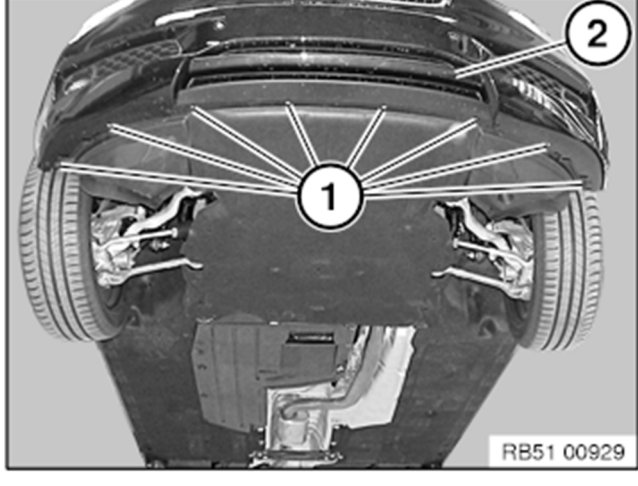
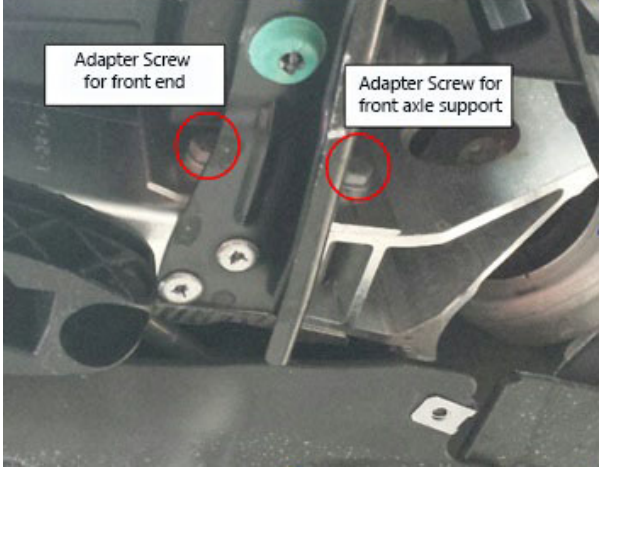
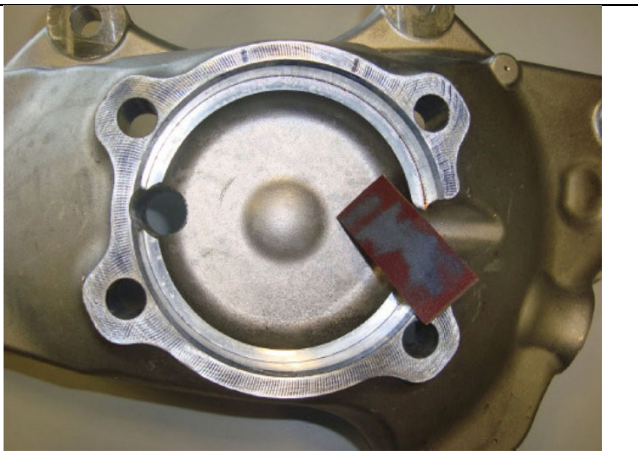
Introduction or Preparatory Items:

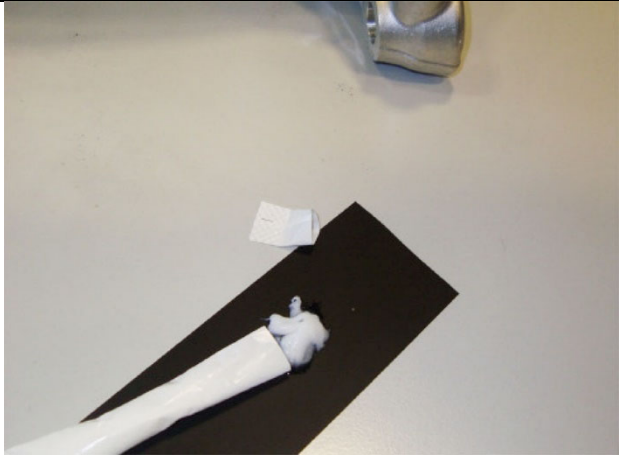
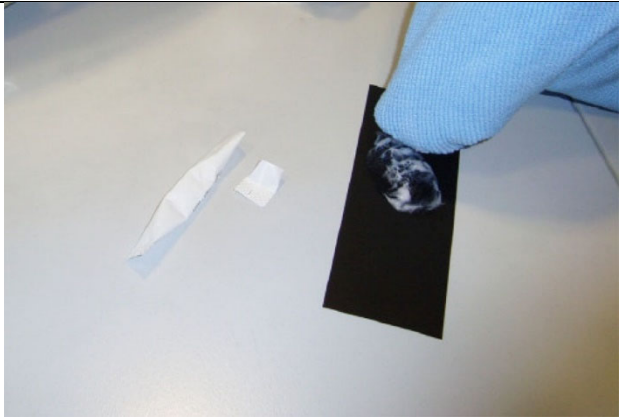

Note: This repair must be performed while the weight of the vehicle is supported on the tires - vehicle on four-column lift (alignment rack) or over service pit.

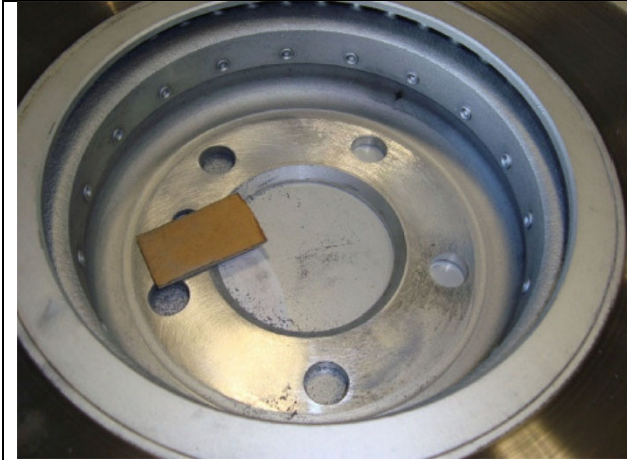
Procedure:

The following procedures should be attempted in **chronological** order to complete the repair with the minimum effort necessary.

 <p style="text-align: right;">R31 0476</p>	<p>I. Check Spring Strut Shock Absorber</p> <p>A. Remove screw connections of spring strut shock absorber on swivel bearing.</p> <p>B. Replace screw connection (1) to specified torque:</p> <p style="padding-left: 20px;">Torque: 56Nm</p> <p>C. Reassess the noise.</p> <p>Has the disturbing steering noise been eliminated?</p> <p>YES- the repair is complete.</p> <p>NO – go to next procedure.</p>
 <p style="text-align: right;">RB31 00289</p>	<p>II. Check Stiffening Plate Screws</p> <p>A. Remove the stiffening plate screw connections (1).</p> <p>B. Clean the contact surfaces of stiffening plate.</p> <p>C. Replace the bolts to the specified torque:</p> <p style="padding-left: 20px;">Jointing torque 56 Nm + 90° angle of rotation</p> <p>D. Reassess the noise.</p> <p>Has the disturbing steering noise been eliminated?</p> <p>YES- the repair is complete.</p> <p>NO – go to next procedure.</p>

	<p>III. Check Front Axle Supports</p> <p>A. Remove front bumper under body panels on left and right side</p>
	<p>B. Release adapter screw connections on front axle supports where shown.</p> <p>C. Retighten screw connection to specified torque: Torque: 19 Nm</p> <p>D. Reinstall front bumper panels on left and right.</p> <p>E. Reassess the noise.</p> <p>Has the disturbing steering noise been eliminated?</p> <p>YES- the repair is complete.</p> <p>NO – go to next procedure.</p>
	<p>IV. Lubricate Wheel Bearing Surface</p> <p>A. Install wheel bearing surface repair kit (part number 83 19 2 298 825).</p> <ol style="list-style-type: none"> 1. Disassemble the wheel bearing according to repair instructions REP 31 21 180. 2. Using the sandpaper, carefully sand the wheel bearing contact face until the surface is evenly roughened while maintaining a flat, planar surface.
<p>Note: Retain sandpaper for later use in this procedure.</p>	

	<p>3. Squeeze the components of the provided lubricant onto a mixing surface and thoroughly blend together.</p>
	<p>4. Rub all of the lubricant mixture into the tip of a folded cloth.</p>
	<p>5. Using the part of the cloth containing the lubricant, rub the wheel bearing contact face, thoroughly working the lubricant into the fine scorings created during sanding.</p> <p>When completed, the surface must be sticky to the touch.</p> <p>Note: There must not be any excess lubricant remaining on the edges.</p>



- B. Remount the wheel bearings.
- C. Using the sandpaper, roughen the inside of the brake disc chamber/wheel bearing contact face, particularly any shiny patches.

Note: There must not be any lubricant applied to the wheel bearing/brake disc contact surface.

- D. Remove any dust from the brake disc chamber with a dry cloth.
- E. Reassemble all components without any further cleaning.