

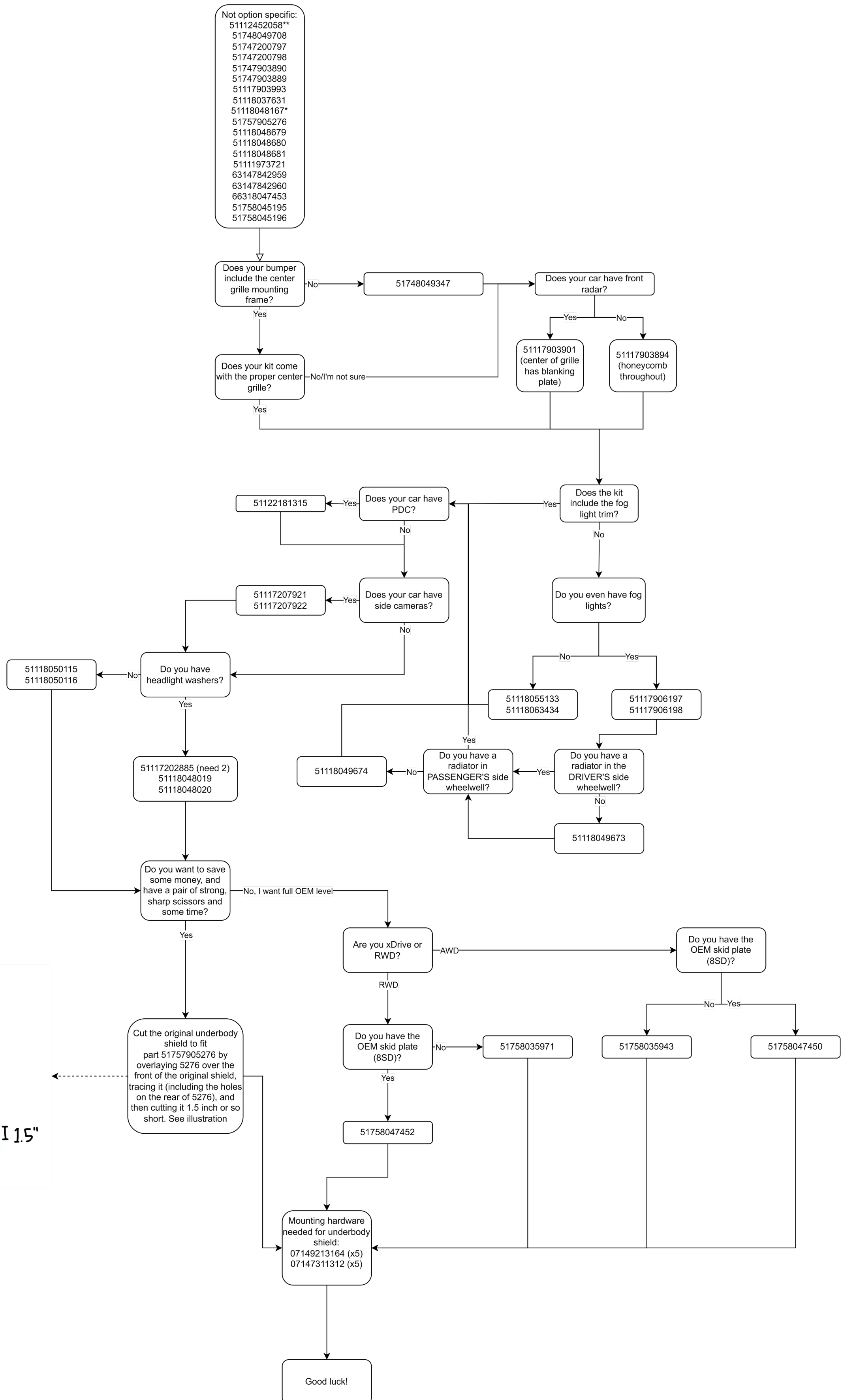
Unspec's M Sport Retrofit Parts Flowchart Guide for Pre-LCI cars (v1.0)

Guide assumes the bumper cover, and maybe the center grille mounting frame, is the ONLY thing you have. Adjust parts needed as needed and using your own judgement, a lot of eBay kits will include certain items. Google image search the part numbers to determine what your kit already comes with. Parts listed are for a OEM-level retrofit.

Guide also includes the M specific license plate mount (marked with a *), but I strongly recommend NOT getting it and instead figuring out a less destructive way of mounting your plate

The mounting hardware (marked with a **) isn't strictly necessary, but I highly recommend it since some stuff might break/strip as you go, and it's worth just refreshing the mounting hardware rather than transferring them over.

Not option specific:
 51112452058**
 51748049708
 51747200797
 51747200798
 51747903890
 51747903889
 51117903993
 51118037631
 51118048167*
 51757905276
 51118048679
 51118048680
 51118048681
 51111973721
 63147842959
 63147842960
 66318047453
 51758045195
 51758045196



Yellow: Trace Line
 Red: Cut line
 Red dots: Where-ish to drill the holes, use 5276 as guide.

