

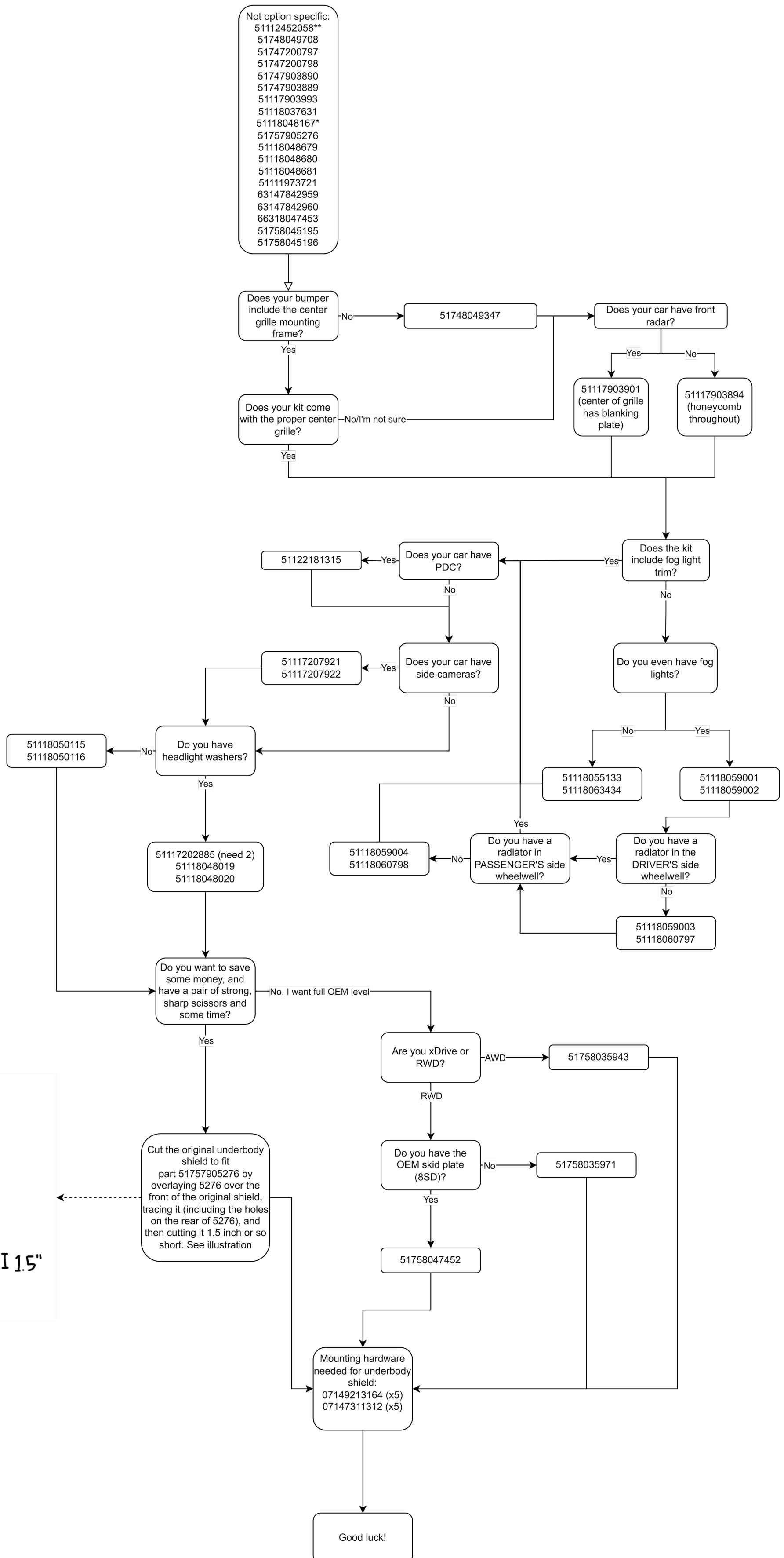
Unspec's M Sport Retrofit Parts Flowchart Guide for LCI cars (v1.0)

Guide assumes the bumper cover, and maybe the center grille mounting frame, is the ONLY thing you have. Adjust parts needed as needed and using your own judgement, a lot of eBay kits will include certain items. Google image search the part numbers to determine what your kit already comes with. Parts listed are for a OEM-level retrofit.

Guide also includes the M specific license plate mount (marked with a \*), but I strongly recommend NOT getting it and instead figuring out a less destructive way of mounting your plate

The mounting hardware (marked with a \*\*) isn't strictly necessary, but I highly recommend it since some stuff might break/strip as you go, and it's worth just refreshing the mounting hardware rather than transferring them over.

Not option specific:  
 51112452058\*\*  
 51748049708  
 51747200797  
 51747200798  
 51747903890  
 51747903889  
 51117903993  
 51118037631  
 51118048167\*  
 51757905276  
 51118048679  
 51118048680  
 51118048681  
 5111973721  
 63147842959  
 63147842960  
 66318047453  
 51758045195  
 51758045196



Yellow: Trace Line  
 Red: Cut line  
 Red dots: Where-ish to drill the holes, use 5276 as guide.

